



# Yavapai County



Our Mission: "Yavapai County will serve and protect its citizens through efficient management of all its resources to enhance the lives of those we serve."

**For Immediate Release**

**Thursday, October 01, 2020**

**For further information, contact:** Terri Farneti, Public Health Coordinator  
928.442.5596

## October 1<sup>st</sup> Update - Yavapai County Community Health Services Yavapai County reports 9 COVID-19 Cases, 2 Deaths

Apache	3,569	Coconino	4,198	Cochise	1,912	Graham	868	Greenlee	59
Gila	1,372	La Paz	545	Maricopa	142,287	Mohave	4,017	Navajo	5,802
Pima	25,706	Pinal	10,672	Santa Cruz	2,857	Yavapai	2,575	Yuma	12,765

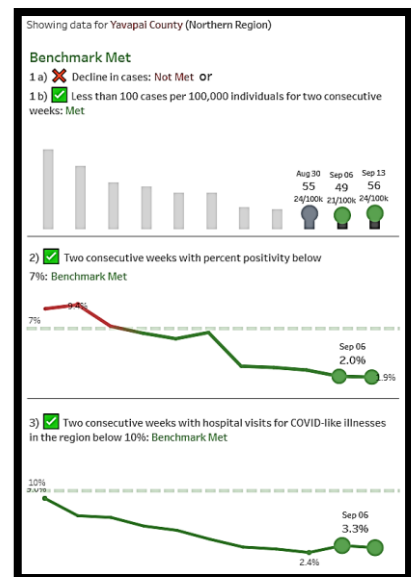
1,765,551 Arizonans have been tested for COVID-19 with 218,507 positive results and 5,674 deaths. Yavapai County reports an additional 332 residents tested since yesterday and 43,474 tested overall. There have been 2,575 positive cases, 1,317 recovered, and 84 deaths. YRMC West is caring for 4 COVID-19 patients with 2 persons under investigation (PUI), the East campus has 2 COVID-19 patients and 2 PUI. Verde Valley Medical Center reports 2 COVID-19 hospitalizations and 3 PUI. The VA reports no COVID-19 patients.

New COVID-19 Cases since Yesterday									
Apache	+15	Coconino	+32	Cochise	+1	Graham	+17	Greenlee	n/c
Gila	+26	La Paz	+1	Maricopa	+431	Mohave	+13	Navajo	+1
Pima	+78	Pinal	+30	Santa Cruz	+8	Yavapai	+9	Yuma	+35

Confirmed COVID-19 cases in Arizona reached 218,323 today, an increase of 705 from the previous day, according to the Arizona Department of Health Services. The number marks the 13th straight day that daily cases dropped below 1,000.

While July saw an average increase of 3,075 new cases a day, Arizona averaged 877 new cases a day in August and averaged just 552 new cases a day in September. The number of deaths attributed to COVID-19 stands at 5,674 in Arizona after 24 new reported deaths since yesterday. Rates of infection and death are down sharply from just a month ago and hospital bed availability has improved, which experts attribute to tighter restrictions on congregating and mask-wearing, among other changes.

The decrease means more parts of the state met benchmarks that let them enter the "moderate" transmission zone that allows some reopening, with Maricopa and Pima counties meeting the benchmarks.



<https://www.azdhs.gov/preparedness/epidemiology-disease-control/infectious-disease-epidemiology/index.php#novel-coronavirus-schools>

★ **Get your Flu Shot! Drive-through community flu clinic tomorrow at the Mayer Recreation Center Full schedule of rural community clinics available at [www.yavapai.us/chs](http://www.yavapai.us/chs) and click on the flu shot banner.**

★ **County COVID-19 Data, Testing Sites, School & Business Guidelines & Resources: [www.yavapai.us/chs](http://www.yavapai.us/chs)**

★ **Yavapai Emergency Phone Bank: 928-442-5103 - Monday-Thursday, 8:00 a.m. – 5:00 p.m.**

★ **COVID-19 information en español: <https://azhealth.gov/covid-19>**