

RECLAMATION

Managing Water in the West

Central Yavapai Highlands Water Resources Management Study Technical Working Group Meeting

Wednesday May 14, 2008

Yavapai County Water Advisory Committee

Arizona Department of Water Resources

Bureau of Reclamation



U.S. Department of the Interior
Bureau of Reclamation

Four Approaches to Water Planning and Management in Rural Arizona



Don't Want to Know



Denial



Excusers



Take Charge (Appraisal Studies)

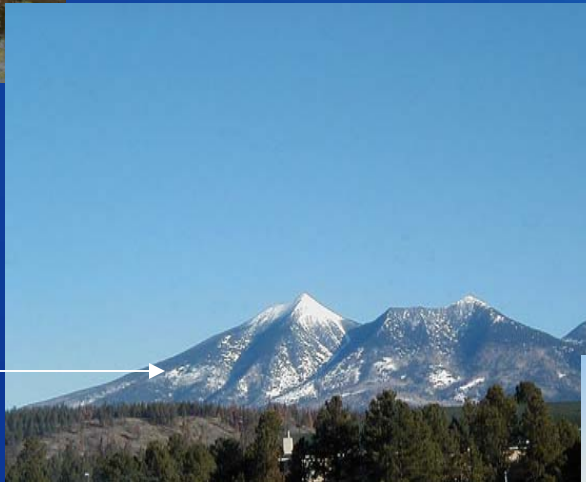
RECLAMATION

Appraisal Studies Already Completed



San Pedro

Coconino Plateau



Mogollon Highlands



Lessons Learned??

RECLAMATION

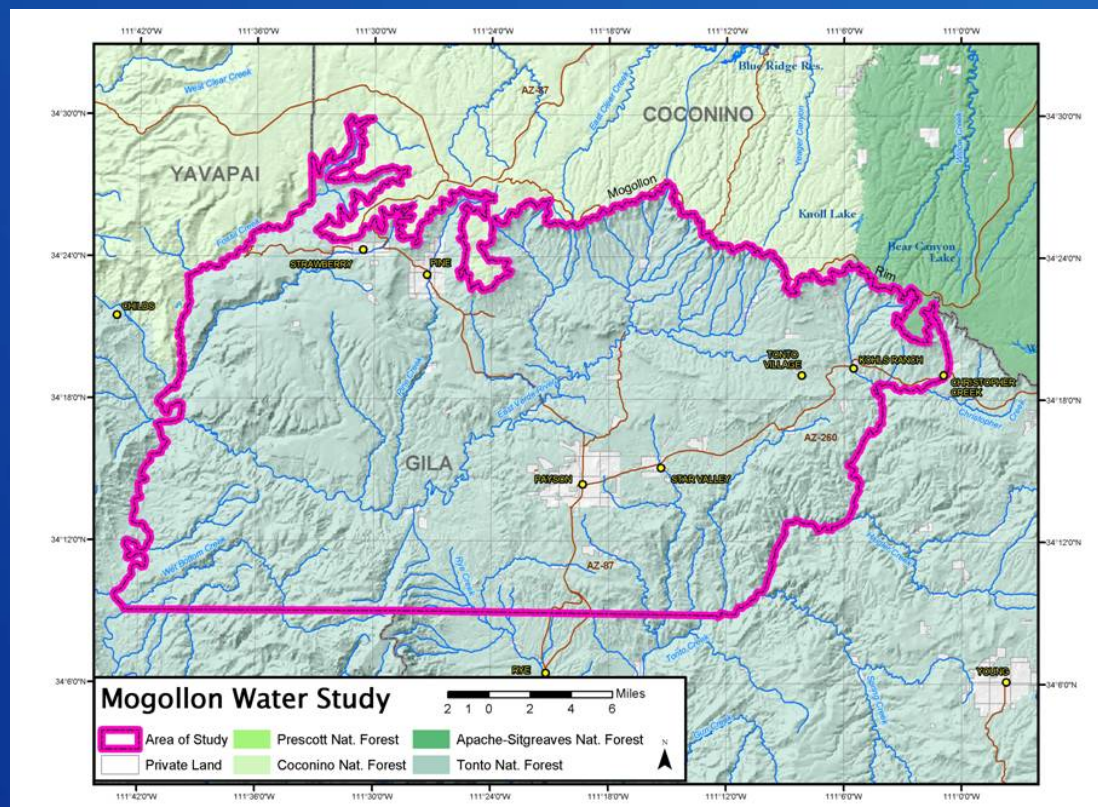
Mogollon Rim Water Resources Management Study

Study Partners

Town of Payson
Gila County
Bureau of Reclamation

Participating Agencies

Arizona Department of Water Resources
Northern Arizona University
U.S. Forest Service
U.S. Geological Survey
Salt River Project
Tonto Apache Tribe
Town of Star Valley
Brooke Utilities
Pine Strawberry WID

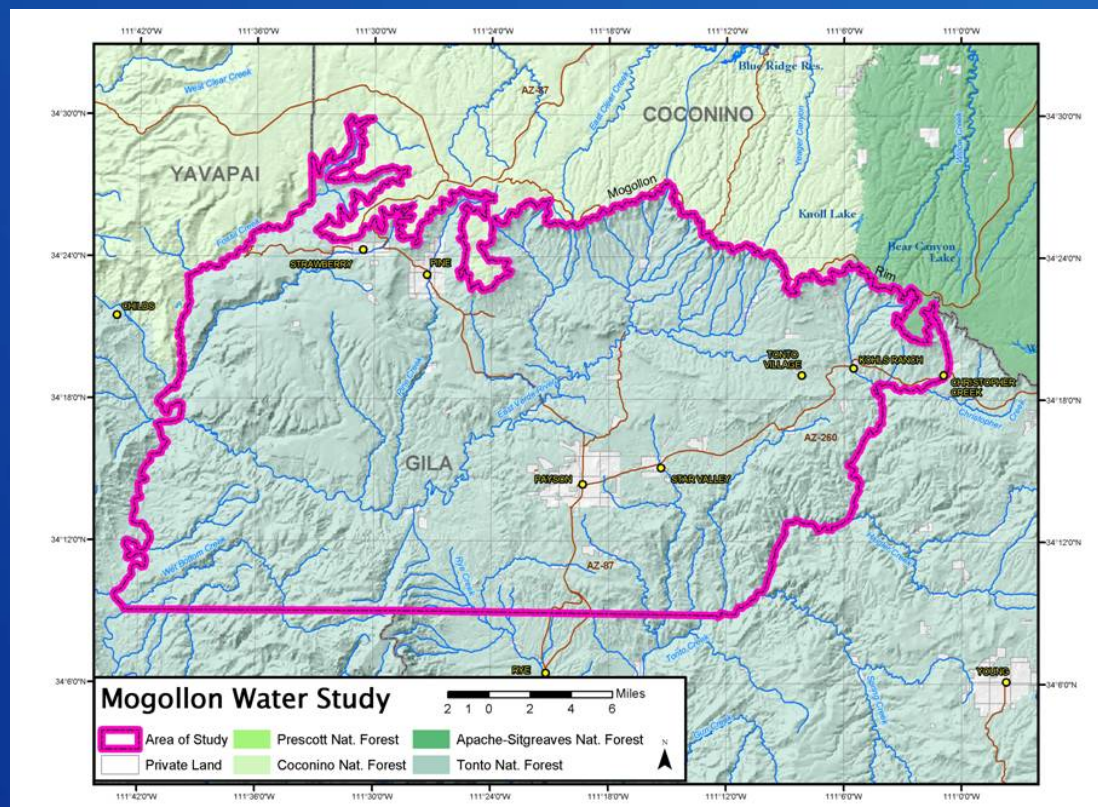


RECLAMATION

Mogollon Rim Water Resources Management Study

Problem Statement Developed:

There will be an unmet water demand of about 3,500 acre-feet of water annually in the next 30 to 40 years.



RECLAMATION

Upper San Pedro Partnership Sierra Vista Sub-Watershed

Study Partners

**Arizona Department of
Water Resources**

Bureau of Reclamation

Participating Agencies

Fort Huachuca

Bureau of Land Management

U.S. Forest Service

National Park Service

U.S. Geological Survey

U.S. Department of Agriculture ARS

U.S. Fish and Wildlife Service

State Land Department

Arizona Department of Environmental Quality

Hereford Natural Resources Conservation District

Cochise County

Sierra Vista

Huachuca City

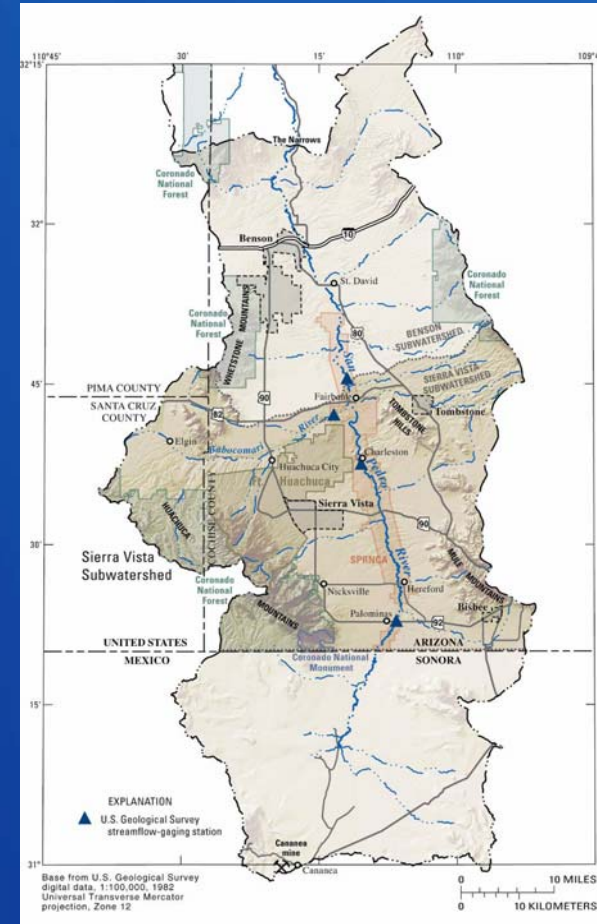
Bisbee Tombstone

The Nature Conservancy

Audubon Society

Bella Vista Ranches

Arizona Association of Conservation Districts

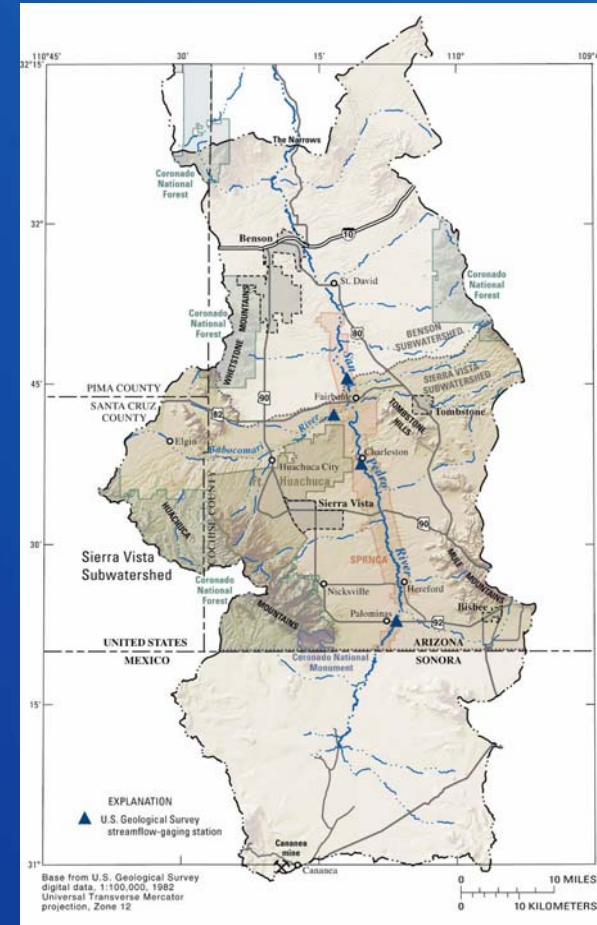


RECLAMATION

Upper San Pedro Partnership Sierra Vista Sub-Watershed

Problem Statement Developed:

Water levels in parts of the regional aquifer of the Sierra Vista Sub-watershed are declining, with the potential to impact the hydrologic conditions of the San Pedro Riparian National Conservation Area. A set of water augmentation solutions is needed that will add approximately 10,000 acre-feet a year by 2011 and 26,000 afy by 2050 to negate a portion of the 38,500 afy total demand projected by 2050.



RECLAMATION

North Central Arizona Water Supply Study

Study Partners

Arizona Department of
Water Resources

Bureau of Reclamation

Participating Agencies

Navajo Nation

Hopi Tribe

Havasupai Tribe

Grand Canyon Trust

U.S. Geological Survey

U.S. Fish and Wildlife Service

City of Flagstaff

City of Page

City of Williams

Coconino County

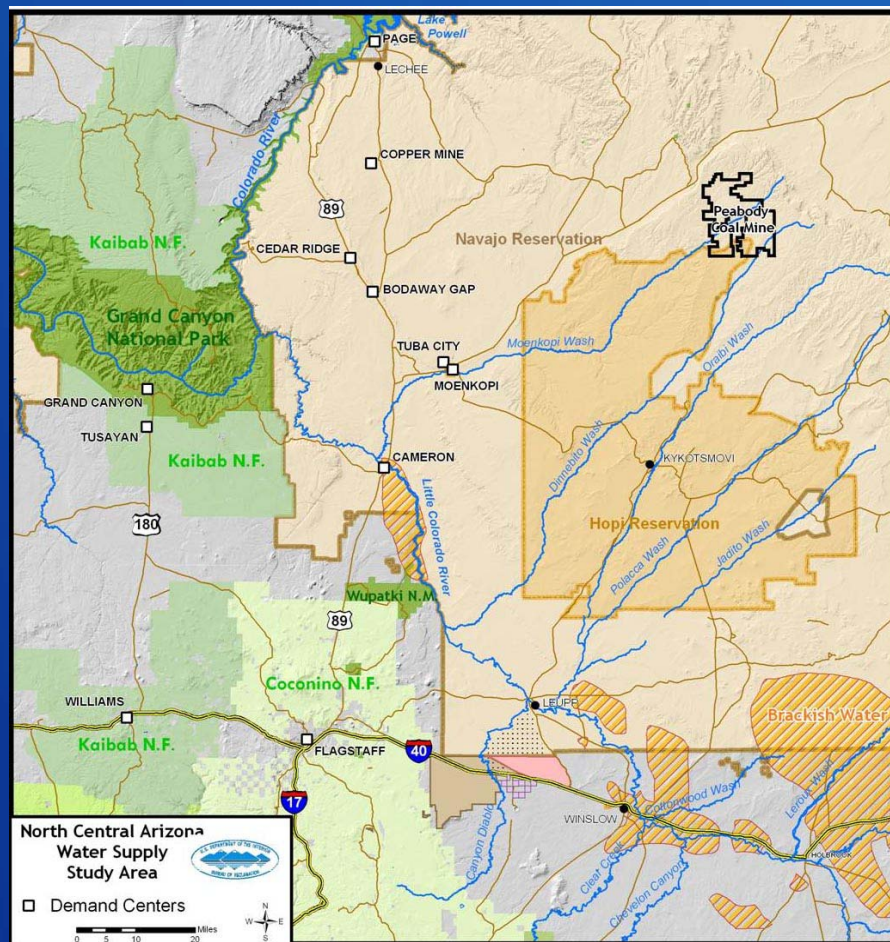
The Nature Conservancy

Grand Canyon National Park

Tusayan

NRCD

Doney Park Water Company



RECLAMATION



North Central Water Supply Study

ADWR Initiates North Central Water Supply Study in 1998

Coconino Plateau Water Advisory Council Formed in 2000

Coconino Plateau Water Advisory Council in 2002



RECLAMATION

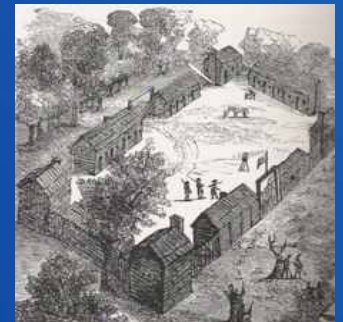


North Central Water Supply Study

- Coconino Plateau Water Advisory Council Reformed in 2004/2005
- North Central Water Supply Appraisal Study Completed in July 2006
- Problem Statement Developed: There Will be an Unmet Water Demand of 24,700 afy by 2050
- Coconino Plateau Water Advisory Council Unanimously Votes to Seek Congressional Authority to Conduct Feasibility Study of Identified Solutions in August 2007

RECLAMATION

Lessons Learned



RECLAMATION

Lessons Learned

1. All players that control land or water and/or make policy with regard to land and water use must be at the table.
2. Goals and Objectives for the Region need to be developed and accepted by ALL.
3. Personal agendas at the expense of other members need to be abandoned.
4. A philosophy of regionalization needs to be strived for. Coconino Plateau's Mantra became "all for one and one for all"
5. Alternative Solutions should only be developed after the problem statement has been identified and accepted by all members.
6. All alternative solutions need to be identified.

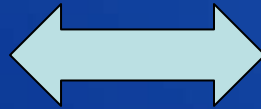
RECLAMATION

Lessons Learned cont.

7. Expect to have disagreements and difference of opinions
8. It is going to take a lot of work, but if everyone goes into it with an open mind and a desire to really work together the end result can be extremely rewarding.



It is your
Choice



RECLAMATION

Lessons Learned



RECLAMATION