



Conserving Arizona's Future: A Citizens' Initiative

Three Primary Goals

- **Conserve 694,000 acres**
- **Require state and local authorities to cooperate in the planning of state trust lands**
- **Protect and guarantee an essential classroom funding stream**

EDUCATION/CONSERVATION/BUSINESS

*Arizona Education Association
Arizona League of Conservation Voters
Arizona Mountaineering Club
Arizona State Horsemen's Association
Arizona Public Service
Arboretum at Flagstaff
Desert Foothills Land Trust
Grand Canyon Trust
McDowell Sonoran Land Trust
Mountain Bike Association of Arizona
Oracle Land Trust
Phoenix Mountains Preservation Council
Sonoran Audubon Society
Sonoran Institute
Superstition Area Land Trust
The Nature Conservancy in Arizona
Trust for Public Land
Tucson Audubon Society
Valley Partnership...*

28 groups as of 9/14/05

How we got here



Key elements

- ***694,000 acre Conservation Reserve***
- ***Planning and Disposition***
- ***Administration and Management***

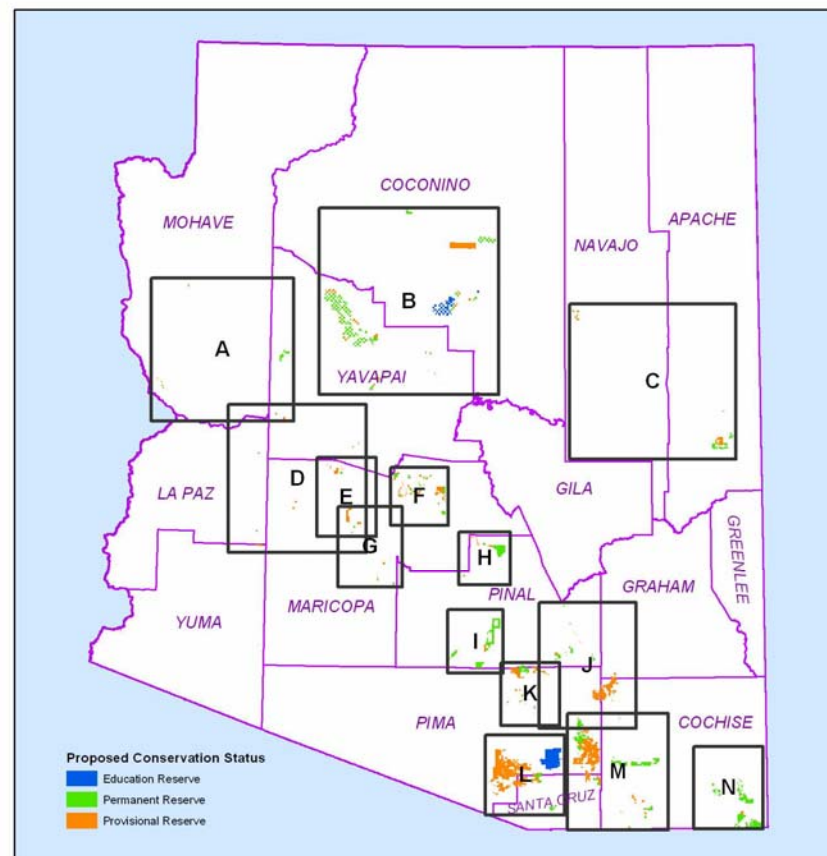
Conservation Reserve

Permanent
- 260,000 acres

Provisional
- 361,000 acres

Educational
- 73,000 acres

For more info:
aztrustlands.com



Conserving Arizona's Future

Regional Maps

- | | | |
|------------------------------|-------------------------------|--|
| A, Western Arizona | E, White Tanks and Wickenburg | J, Lower San Pedro River Valley |
| B, North-Central Arizona | F, Metro Phoenix -- Northeast | K, Tucson and Northwest Tucson |
| C, Northeast Arizona | G, Metro Phoenix -- Southwest | L, Santa Cruz River Valley |
| D, BLM Wilderness Inholdings | H, Metro Phoenix -- Southeast | M, Upper San Pedro River and Cienega Creek |
| | I, South-Central Arizona | N, Southeast Arizona |

Permanent Reserve

- **Permanently protected upon enactment**
- **Can be transferred to city, county or state agencies if not leased for grazing**
- **No consideration or payment**

Provisional Reserve

- Minimum 5-year “reserve period” starts when land is planned or located in a city
- Sold at FMV without auction to a conservation buyer
- Non-monetary compensation
- 25-year payment terms
- Reserve status expires if no takers

Educational Reserve



- **Santa Rita Exp. Range and part of Centennial Forest**

- **Transferable to Board of Regents on its request**

- **No consideration or payment**

Reserve Terms

- **Restricted against development**
- **Managed consistent with conservation**
- **Existing leases, uses and ROWs not affected (“grandfathered”)**
- **Reasonable public access**
- **No effect on use, management of other lands**

“Conservation” Defined

preserving the natural, cultural, or historical assets of land, such as open space, scenic beauty, geology, archaeology, protected plants, wildlife, and ecological values

“Development” Defined

Buildings and other improvements for public or private use not in existence as of November 2, 2006, but does not include fences, paths, trails, trailheads, roadways, utility lines and associated facilities, canals, drainage improvements, wells, signage, range improvements, environmental education facilities, communications facilities, research or monitoring stations and associated equipment or, in order to facilitate reasonable public access, picnic, camping, hunting, fishing, parking security, comfort, maintenance and similar facilities.

How were lands selected?

- **Conservation science analysis**
- **Agency priorities**
- **Local open space priorities**
- **Landowners who support conservation**
- **Final map negotiated among stakeholders**

Conservation Values



Buffers to parks & public lands

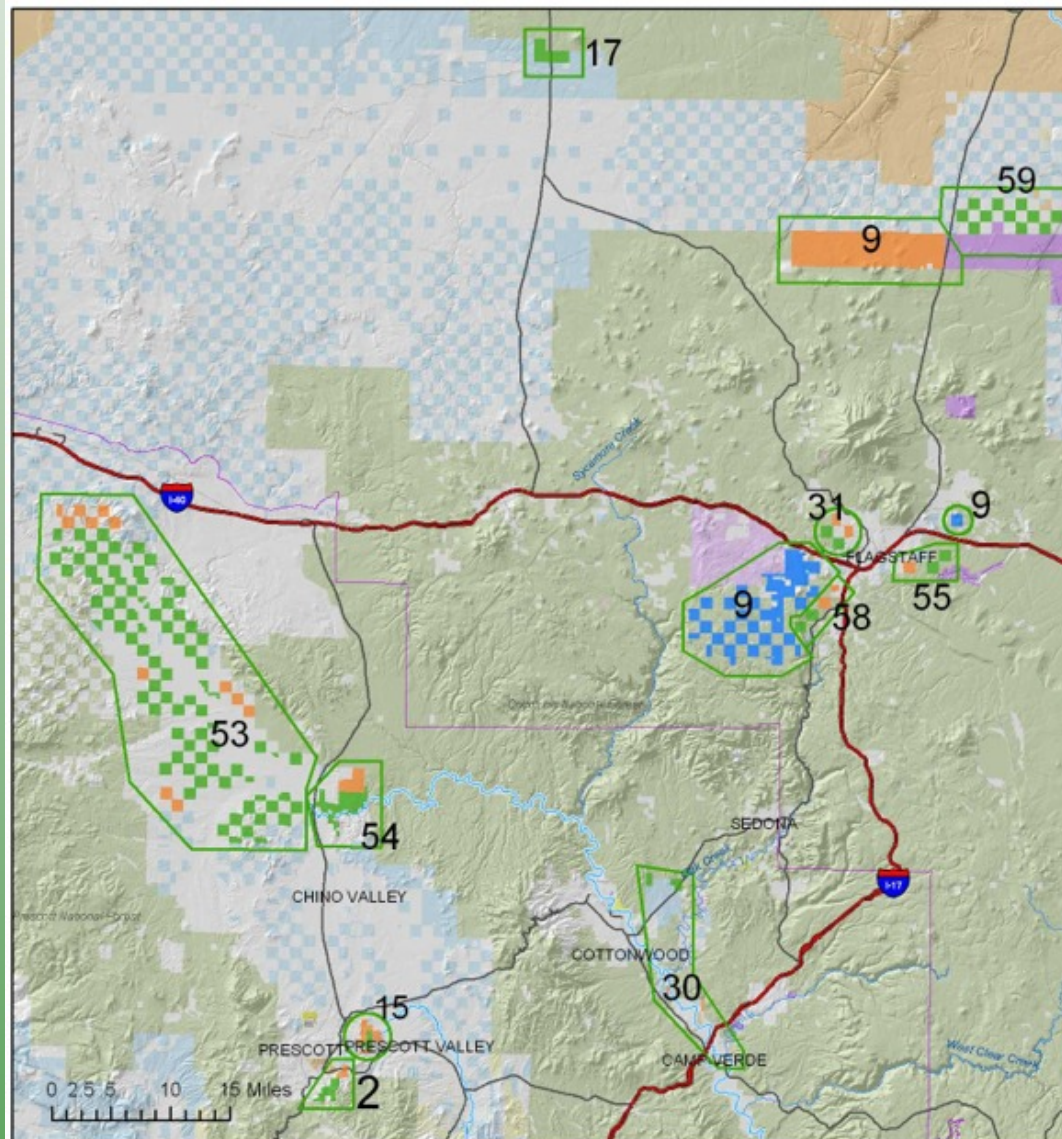


Aquifer & watershed protection





Recreation
& open
space



Surface Mgmt.

- BLM
- Bureau of Reclamation
- National Forest
- Game and Fish
- Indian Res.
- Local or State Parks
- Military
- National Park/Monument
- Private
- State Trust
- Fish and Wildlife

Conserving Arizona's Future

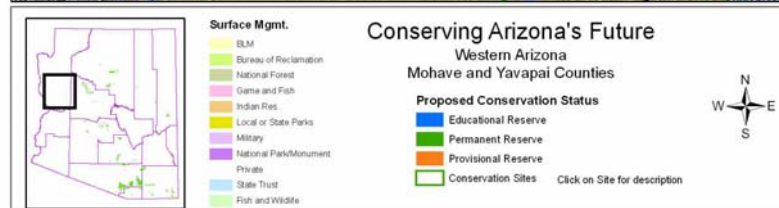
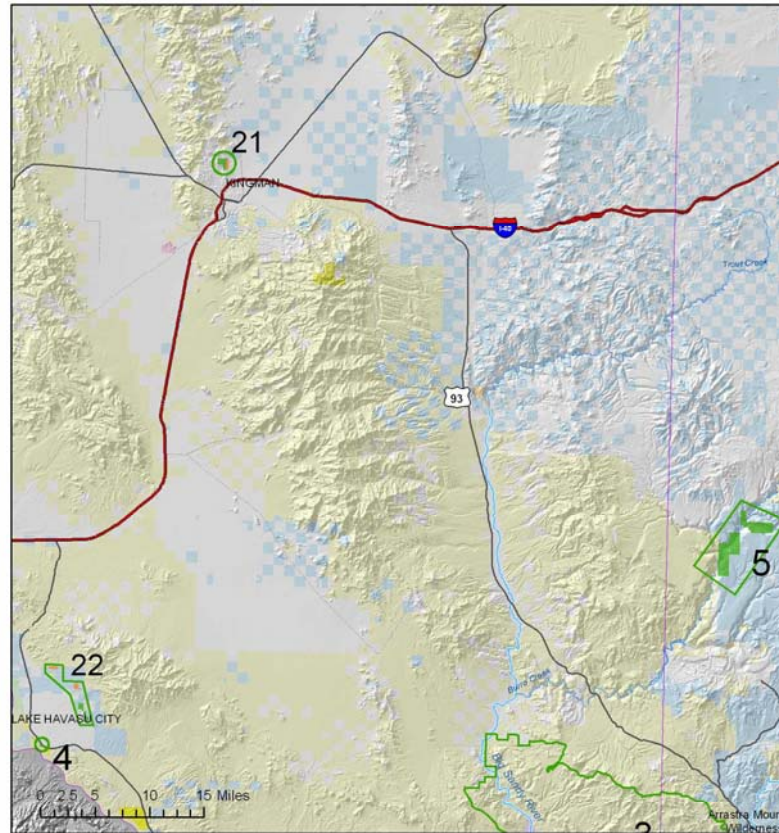
North-Central Arizona
Yavapai and Coconino Counties

Proposed Conservation Status

- Educational Reserve
- Permanent Reserve
- Provisional Reserve
- Conservation Sites

Click on Site for description





Planning & disposition

- **Must be in conjunction with local government planning**
- **Additional lands may be designated for conservation**
- **Monetary or non-monetary compensation**
- **Participation agreements to share future revenues**
- **ROWs may be granted without auction for non-monetary consideration**

Administration and management

- **Creates a Board of Trustees**
- **7 members, majority involved with public schools**
- **Oversees Trust-related activities of Land Department**
- **Trust proceeds can supplement Land Department budget**

Conditional Enactment

- If approved by voters, Congress needs to amend Enabling Act
- Ineffective if Congress does not act by 12/31/08
- Additional changes to state statutes and rules will be needed



Conserving Arizona's Future

A Citizen's Initiative